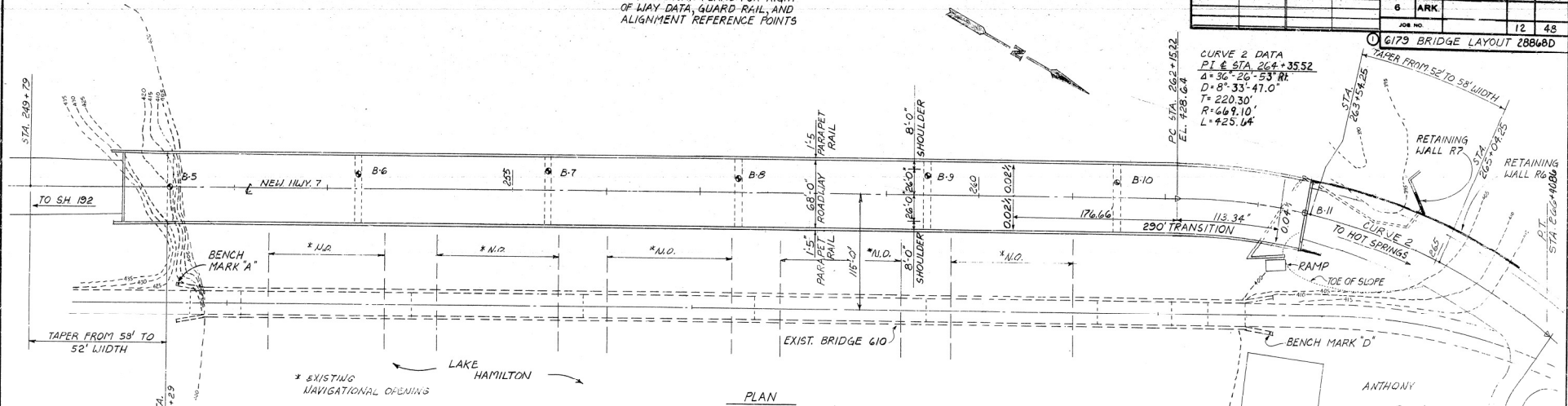


SEE ROADWAY PLANS FOR RIGHT  
OF WAY DATA, GUARD RAIL, AND  
ALIGNMENT REFERENCE POINTS

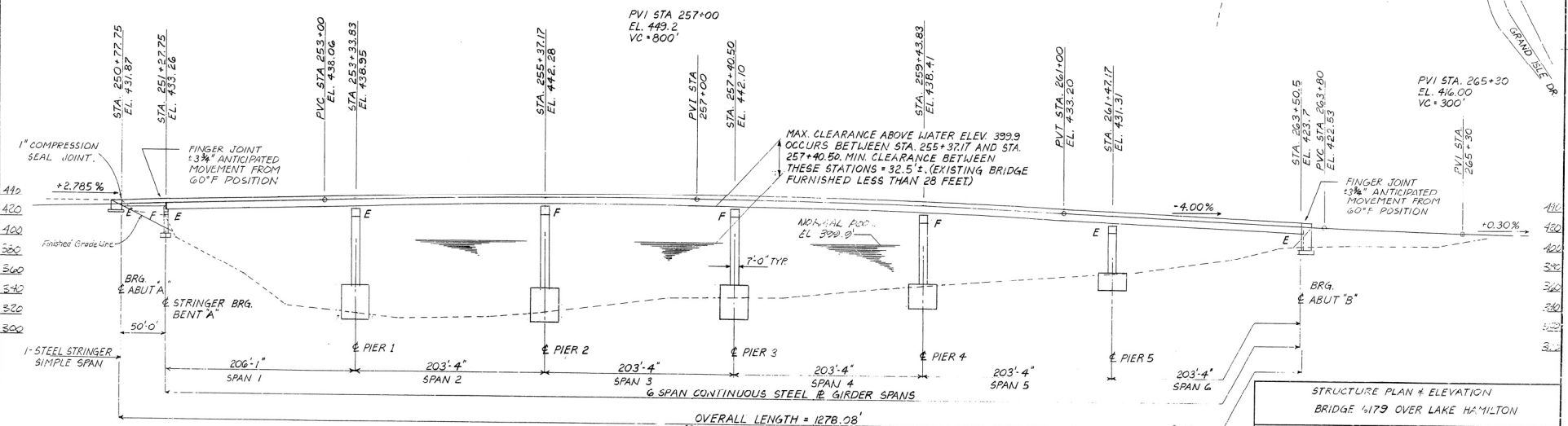
DATE	BY	REVISED	DATE	BY	STATE	FED. AID PROJ. NO.	SHEET NO.	TOTAL SHEETS
					6	ARK.	12	48
JOB NO.								154

CURVE 2 DATA  
PI @ STA 264+35.52  
4° 36' 26" 53" RT  
D=8° 33' 47.0"  
T=220.30'  
R=469.10'  
L=425.64'

6179 BRIDGE LAYOUT 2884BD



PLAN



ELEVATION

FROM	TO	AVG. ELEVATION
6-21-85	11-28-85	399
12-6-85	12-28-86	395
3-14-86	10-31-86	399

1. ALL ELEVATIONS GIVEN AT  
ROADWAY STATIONS ARE ACTUAL  
SURFACE ELEVATIONS EXCEPT  
WHERE MODIFIED BY "ROUNDING"  
DETAIL FOR CROWNED SECTIONS  
SEE DRAWING NO. 28915 & 28941

2. Work to be performed under this Job 60502 consists of:  
1) Installation of Anchor Bolts @ all Piers, Bents, & Abutments.  
2) Completion of Abutment backwalls.  
3) Closure of Parapet sections adjacent to Abutments.  
4) Construction of Superstructures.

The Bents, Piers, and the majority of the Abutments have been constructed under previous contracts.

3. BENCH MARKS:  
BENCH MARK 'A': 1/2" DIAMETER CHISEL HOLE ON TOP OF WEST WING WALL RAILING ABOVE BRASS PLACARD ON THE SOUTH END OF EXISTING BRIDGE 610; ELEV. 430.20.  
BENCH MARK 'D': USCGS BENCH MARK-BRASS CAP IN TOP OF CURB OF EAST WING WALL ON THE NORTH END OF EXISTING BRIDGE 610; ELEV. 419.9

4. See Drawings:  
2884BE & 2884BF For Abutments A & B Details; 28871E thru 28871G for Information on Abutments A & B, Bent A, and Piers 1-5; 28909, 28910, 28913 thru 28916, and 28941 thru 28948 for Superstructure Details.

STRUCTURE PLAN & ELEVATION  
BRIDGE 6179 OVER LAKE HAMILTON

ENGSTROM/MODJESKI AND MASTERS  
CONSULTING ENGINEERS

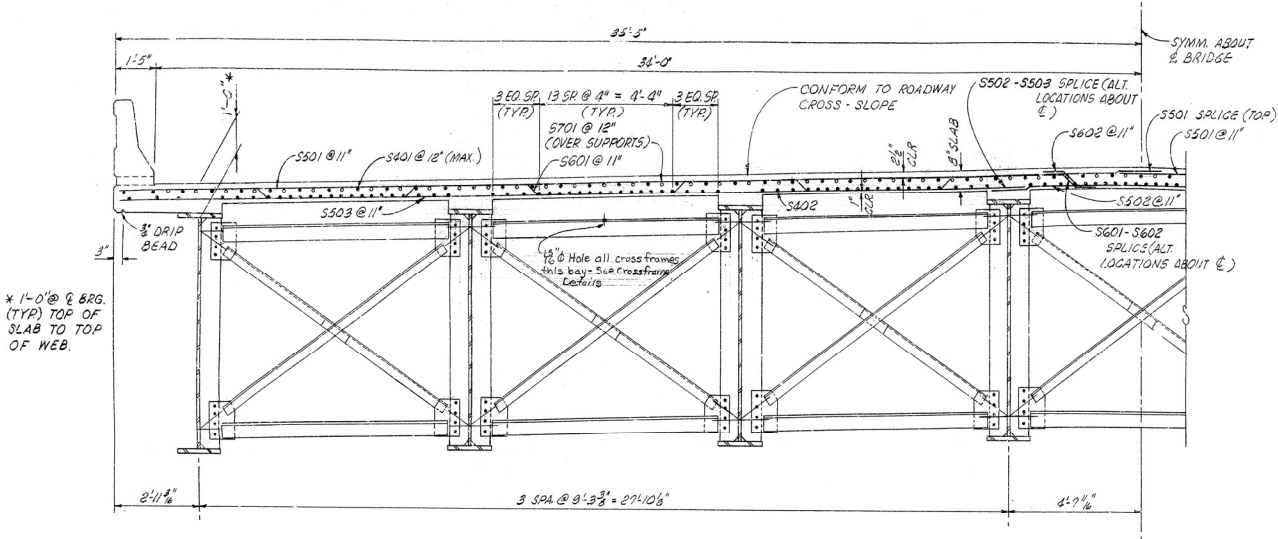
QUACHITA RIVER BRGS. SUPERSTRUCTURE  
GARLAND COUNTY  
ROUTE 7 SEC. 9  
ARKANSAS STATE HIGHWAY COMMISSION

LITTLE ROCK, ARK.

DRAWN BY: JRS DATE: 5-87  
CHECKED BY: DJM DATE: 5-87  
DESIGNED BY: DJM DATE: 5-87

BRIDGE NO. 6179 DRAWING NO. 2884BD

DATE	REV.	DATE	REV.	PER. ROAD	STATE	FED. AID PROJ. NO.	SHEET NO.	TOTAL SHEETS
10-19-89	10-19-89			8	ARK.			
						60502	36	48
						6179	TYP SECTION	28941



NOTE:

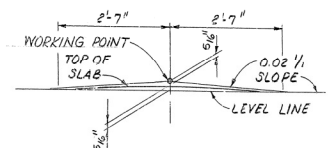
ALTERNATE S501 & S502/S503 WITH S601 / S602

S401 & S402 AS SHOWN-S403

S404 USED TO ALTERNATE @ SPLICE LOCATIONS (SEE DWG. NO. 28946)

ALTERNATE S701 WITH S601 AT PIERS (SEE DWG. NO. 28946)

BOILED LINSEED OIL TREATMENT SHALL BE APPLIED TO THE ROADWAY SURFACE AND THE FACE AND TOP OF CONCRETE PARAPET RAILING.



ROUNDING DETAIL  
TYPICAL FOR CROWNED SECTION

TYP RDWY SECTION  
BR. 6179  
SCALE: 1/4"=1'-0"

GIRDER DESIGN LOADS				
LOAD	A4H	G4G	C,D,E,F	
D.L. 1	350 PLF	350 PLF	350 PLF	
D.L. 2	840 PLF	1010 PLF	1010 PLF	
D.L. 3	420 PLF	470 PLF	140 PLF	
LIVE LOAD	1488 WLS	1688 WLS	1688 WLS	
IMPACT	15.2 %	15.2 %	15.2 %	

NOTES:

FOR STRUCTURE PLAN AND ELEVATION, SEE DWG. NOS. 28963D.

FOR DECK LOAD DESCRIPTION, SEE GENERAL NOTES, DWG. NO. 28848B.

FOR BARRIER DETAILS, SEE DWG. NO. 28909.

FOR REQUIRED SCREED RAIL SUPPORT DETAILS, SEE DWG. NO. 28907.

TYP SECTION  
LAKE HAMILTON BRIDGE - NO. 6179

ENGSTROM / MODJESKI AND MASTERS  
CONSULTING ENGINEERS

QUACHITA RIVER BRGS. (SUPERSTRUCTURE) LAKE HAMILTON  
GARLAND COUNTY  
ROUTE 7 SEC. 9  
ARKANSAS STATE HIGHWAY COMMISSION  
LITTLE ROCK, ARK.

DRAWN BY: NLS DATE: 3/87  
CHECKED BY: NLS DATE: 3/87  
DESIGNED BY: JMD DATE: 3/87

BRIDGE NO. 6179  
DRAWING NO. 28941

